

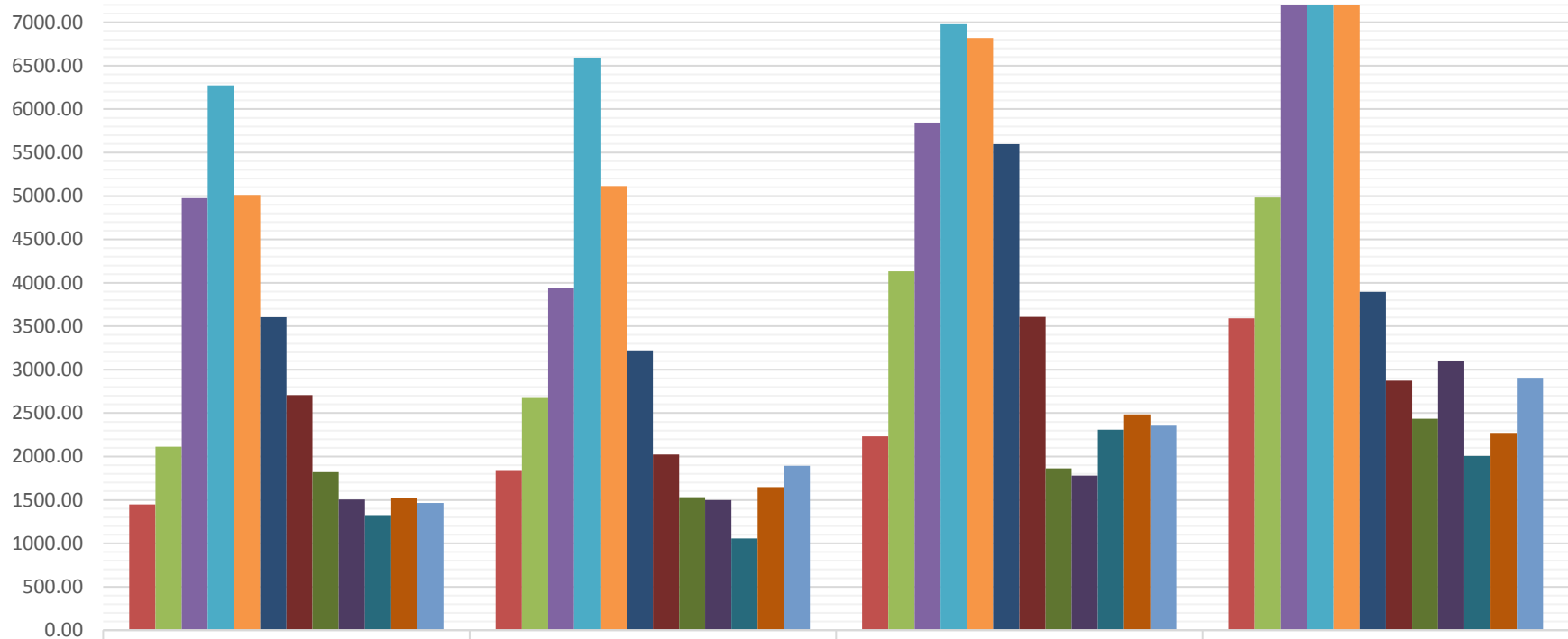
Installed Capacity Vs Generation (Grid Interactive Renewable Energy)



IC/Gen..	2014-15	2015-16	2016-17	2017-18
Installed Capacity (MW) at the end of year	38959.16	45924.04	57244.23	69022.39
Generation (MU) during the year	61719.25	65780.85	81548.21	101839.48

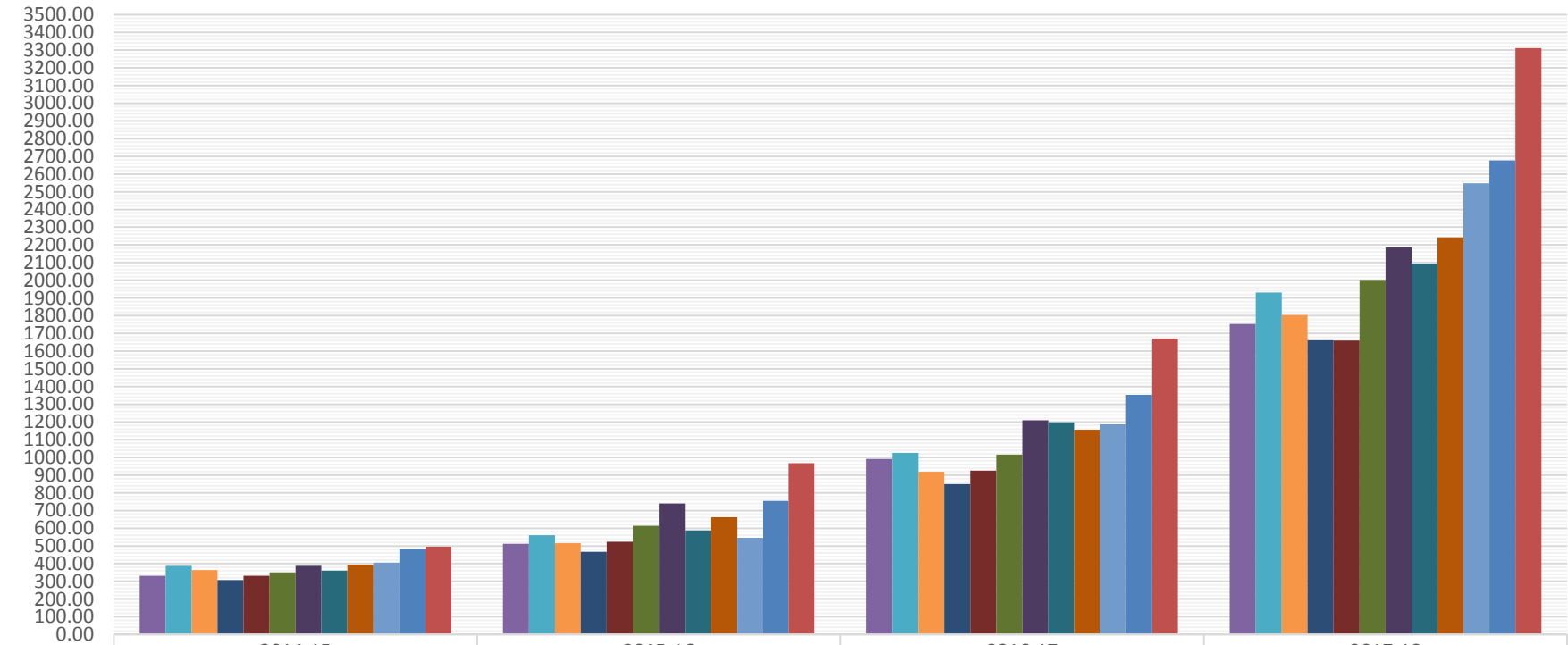
* Installed Capacity is as furnished by PDM Division,CEA

Wind Generation in MU



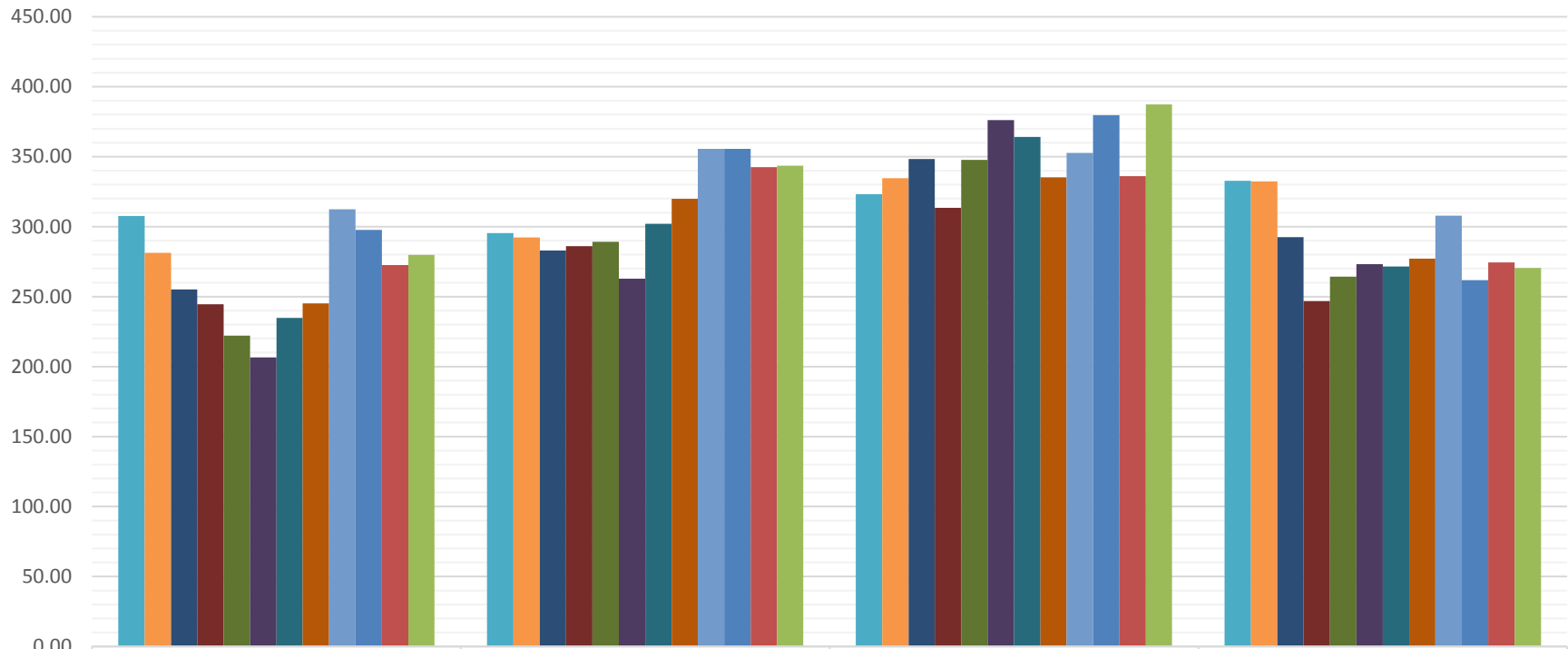
	2014-15	2015-16	2016-17	2017-18
April	1449.23	1832.30	2231.73	3590.03
May	2112.01	2673.75	4132.57	4982.92
June	4976.03	3946.56	5844.60	7229.12
July	6272.64	6591.87	6978.01	9858.30
August	5010.62	5113.45	6819.39	7512.16
September	3604.73	3221.00	5596.24	3897.08
October	2707.72	2023.14	3607.68	2873.55
November	1820.15	1530.56	1863.86	2435.91
December	1504.44	1498.01	1779.89	3099.86
January	1326.61	1056.32	2308.45	2007.53
February	1520.24	1649.16	2486.28	2272.87
March	1463.89	1893.26	2355.65	2906.76

Solar Generation in MU



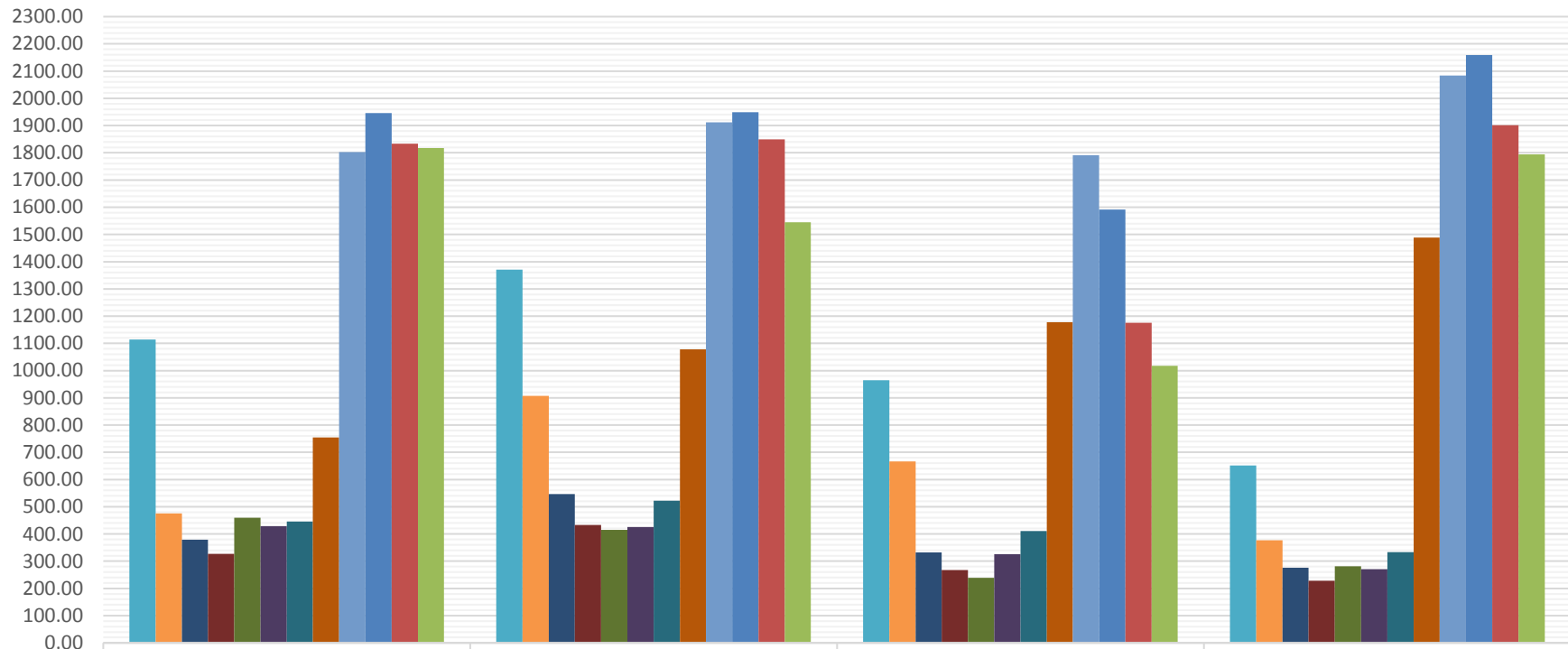
	2014-15	2015-16	2016-17	2017-18
April	331.00	512.30	991.70	1752.74
May	387.72	560.89	1024.88	1931.30
June	364.03	515.06	919.61	1803.35
July	307.59	467.29	849.04	1661.29
August	330.93	522.68	925.49	1660.26
September	350.94	613.02	1015.20	2002.51
October	387.32	739.08	1208.97	2186.00
November	360.30	588.76	1197.81	2094.59
December	393.92	662.04	1156.81	2242.64
January	406.14	545.43	1186.35	2547.77
February	483.85	754.22	1352.50	2677.10
March	495.27	967.16	1671.05	3311.53

Biomass Generation in MU



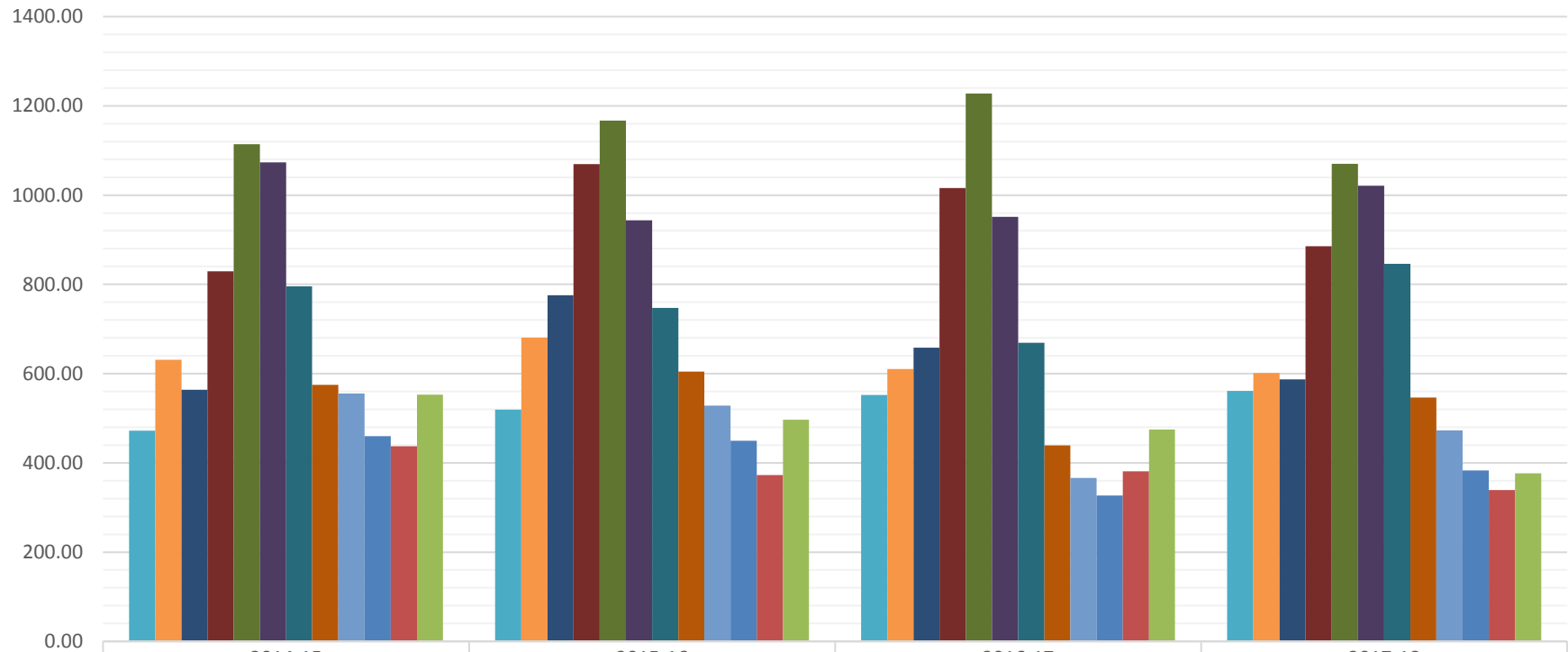
	2014-15	2015-16	2016-17	2017-18
April	307.58	295.35	323.28	332.71
May	281.28	292.21	334.64	332.32
June	255.21	282.92	348.29	292.57
July	244.47	285.96	313.39	246.92
August	222.19	289.14	347.74	264.18
September	206.47	262.75	376.05	273.21
October	234.88	302.00	364.01	271.58
November	245.20	319.82	335.15	277.11
December	312.49	355.56	352.72	307.86
January	297.58	355.51	379.61	261.69
February	272.65	342.49	336.09	274.37
March	279.85	343.50	387.32	270.43

Bagasse Generation in MU



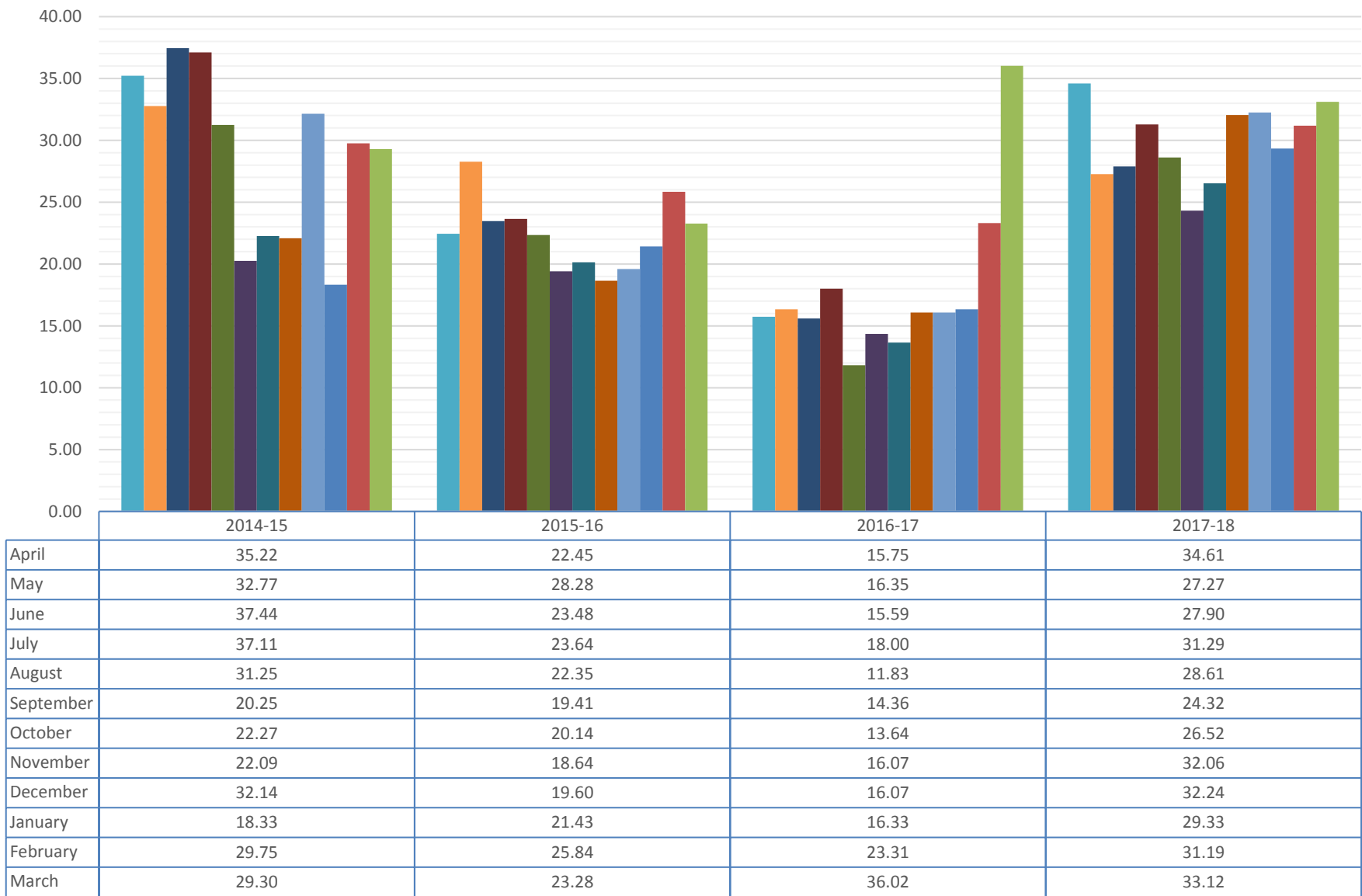
	2014-15	2015-16	2016-17	2017-18
April	1114.30	1371.06	964.34	651.38
May	475.98	906.95	666.84	377.34
June	379.17	546.65	332.13	276.31
July	326.73	432.99	267.86	228.17
August	459.74	414.56	238.98	281.65
September	428.56	425.52	326.08	270.42
October	445.96	522.31	410.87	333.77
November	754.31	1078.53	1177.57	1488.99
December	1802.99	1912.04	1790.83	2083.81
January	1945.86	1948.47	1591.83	2159.55
February	1833.12	1849.65	1175.60	1901.73
March	1817.92	1544.56	1017.41	1794.22

Small Hydro Generation in MU



	2014-15	2015-16	2016-17	2017-18
April	472.35	519.13	552.10	561.57
May	631.17	680.74	610.47	601.25
June	563.68	775.35	657.91	587.41
July	829.16	1069.77	1015.71	885.40
August	1114.17	1166.67	1227.44	1070.06
September	1073.28	943.70	951.52	1021.35
October	795.46	747.37	669.23	845.96
November	574.68	604.47	439.41	546.55
December	555.27	528.56	366.48	472.67
January	459.69	449.34	326.90	383.39
February	437.46	372.61	380.97	339.12
March	553.13	496.80	474.54	376.85

"Others" Generation in MU



* "Others" mean Waste to Energy Sources.