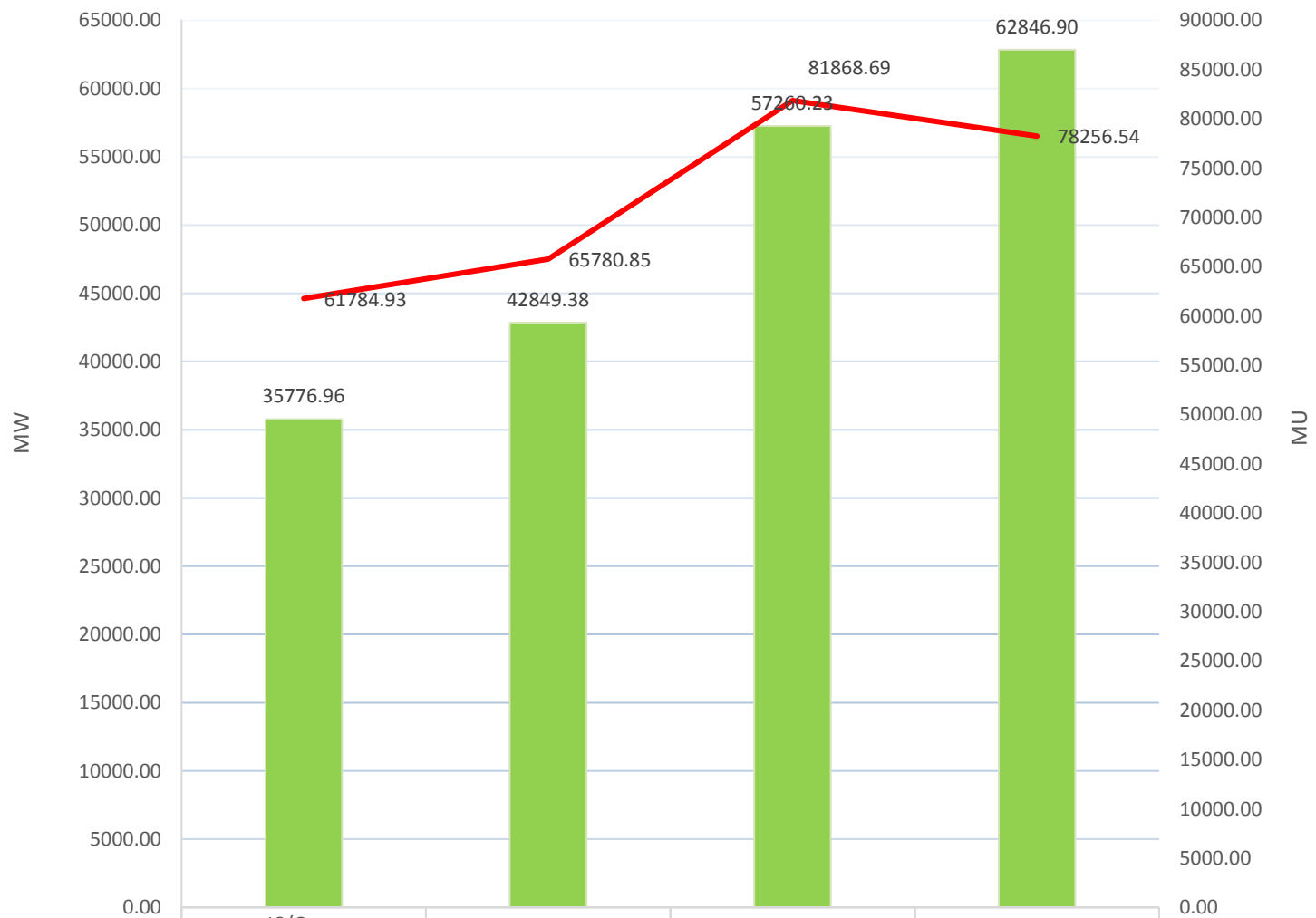


Installed Capacity Vs Generation (Grid Interactive Renewable Energy)

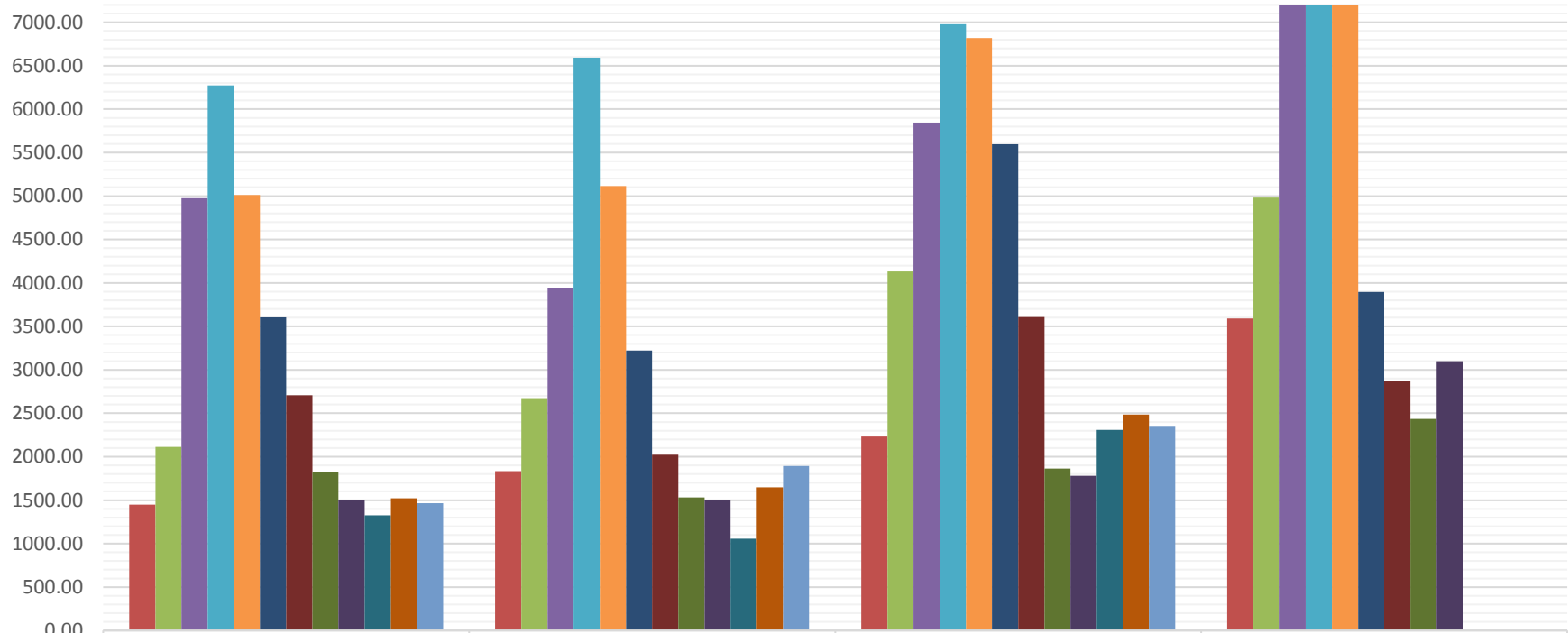
■ Installed Capacity (MW) at the end of year
 — Generation (MU) during the year



| IC/Gen.. | 2014-15 | 2015-16 | 2016-17 | 2017-18 (Upto Dec. 2017) |
|--|----------|----------|----------|--------------------------|
| Installed Capacity (MW) at the end of year | 35776.96 | 42849.38 | 57260.23 | 62846.90 |
| Generation (MU) during the year | 61784.93 | 65780.85 | 81868.69 | 78256.54 |

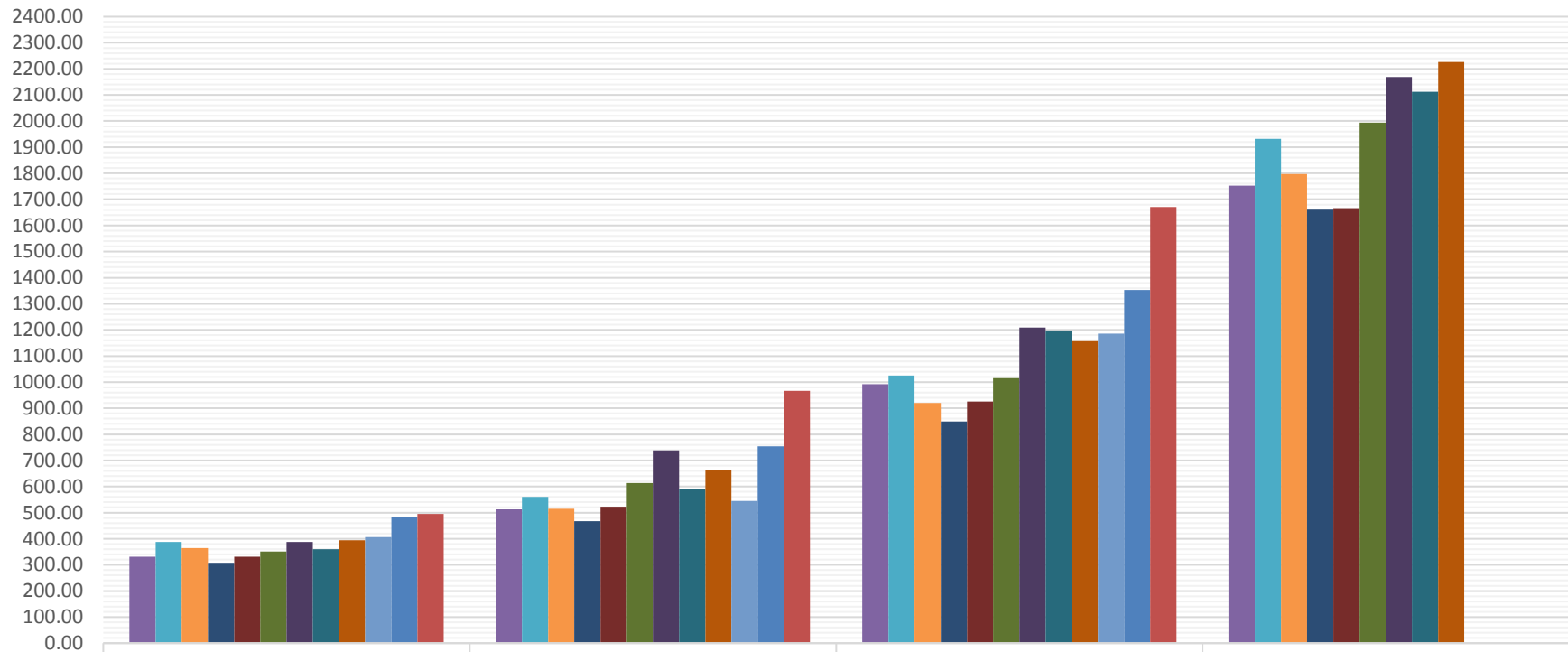
* Installed Capacity is as furnished by MNRE

Wind Generation in MU



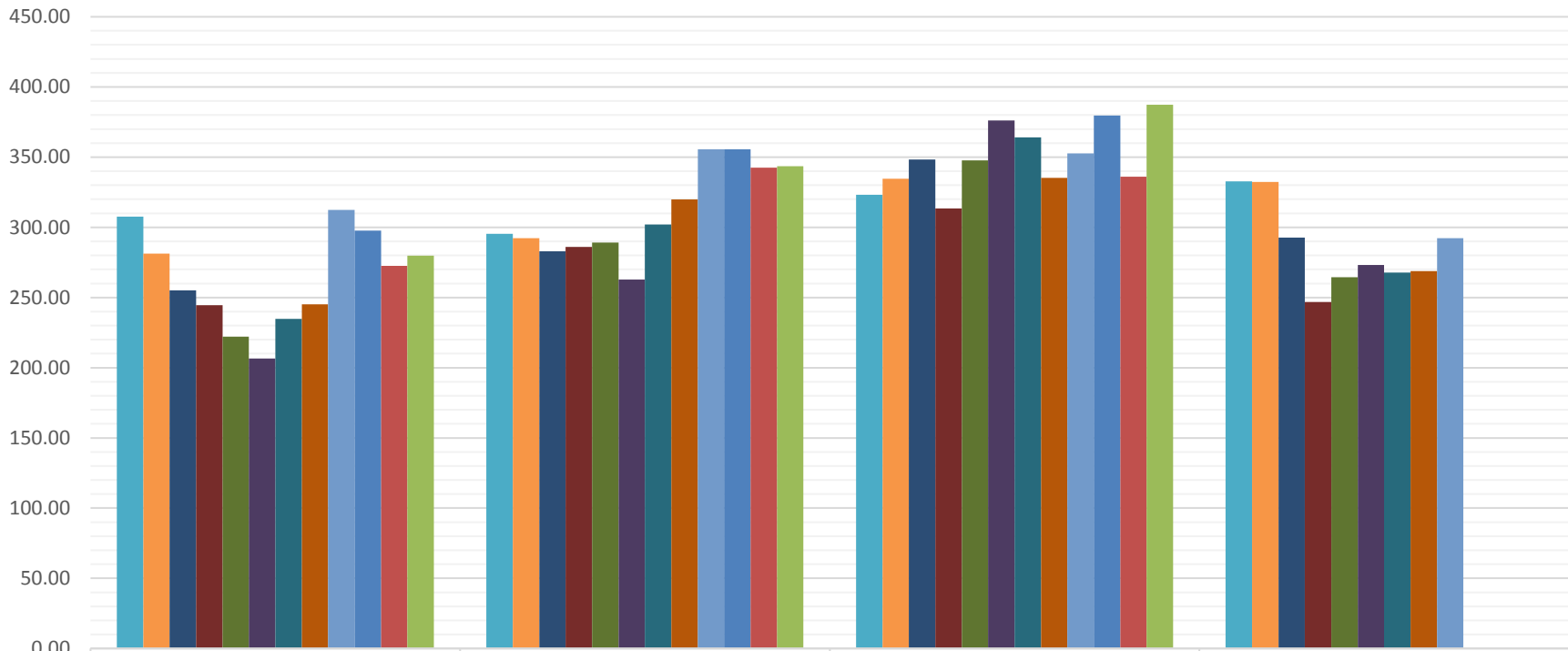
| | 2014-15 | 2015-16 | 2016-17 | 2017-18 |
|-----------|---------|---------|---------|---------|
| April | 1449.23 | 1832.30 | 2231.73 | 3590.02 |
| May | 2112.01 | 2673.75 | 4132.57 | 4982.92 |
| June | 4976.03 | 3946.56 | 5844.60 | 7229.12 |
| July | 6272.64 | 6591.87 | 6978.01 | 9854.34 |
| August | 5010.62 | 5113.45 | 6819.39 | 7512.08 |
| September | 3604.73 | 3221.00 | 5596.24 | 3897.11 |
| October | 2707.72 | 2023.14 | 3607.68 | 2873.55 |
| November | 1820.15 | 1530.56 | 1863.86 | 2435.88 |
| December | 1504.44 | 1498.01 | 1779.89 | 3099.86 |
| January | 1326.61 | 1056.32 | 2308.45 | |
| February | 1520.24 | 1649.16 | 2486.28 | |
| March | 1463.89 | 1893.26 | 2355.65 | |

Solar Generation in MU



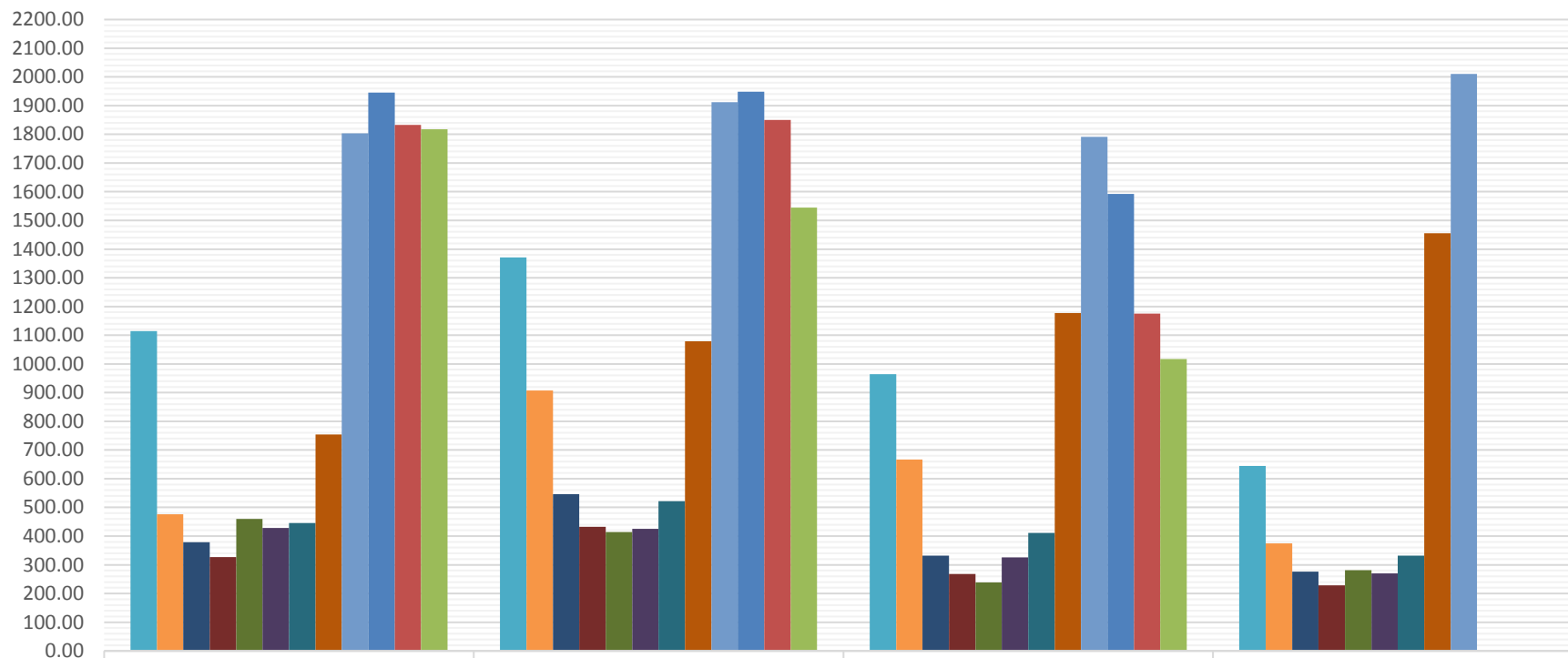
| | 2014-15 | 2015-16 | 2016-17 | 2017-18 |
|-----------|---------|---------|---------|---------|
| April | 331.00 | 512.30 | 991.70 | 1752.65 |
| May | 387.72 | 560.89 | 1024.88 | 1931.37 |
| June | 364.03 | 515.06 | 919.61 | 1796.74 |
| July | 307.59 | 467.29 | 849.04 | 1663.50 |
| August | 330.93 | 522.68 | 925.49 | 1666.43 |
| September | 350.94 | 613.02 | 1015.20 | 1994.08 |
| October | 387.32 | 739.08 | 1208.97 | 2168.79 |
| November | 360.30 | 588.76 | 1197.81 | 2112.58 |
| December | 393.92 | 662.04 | 1156.81 | 2226.17 |
| January | 406.14 | 545.43 | 1186.35 | |
| February | 483.85 | 754.22 | 1352.50 | |
| March | 495.27 | 967.16 | 1671.05 | |

Biomass Generation in MU



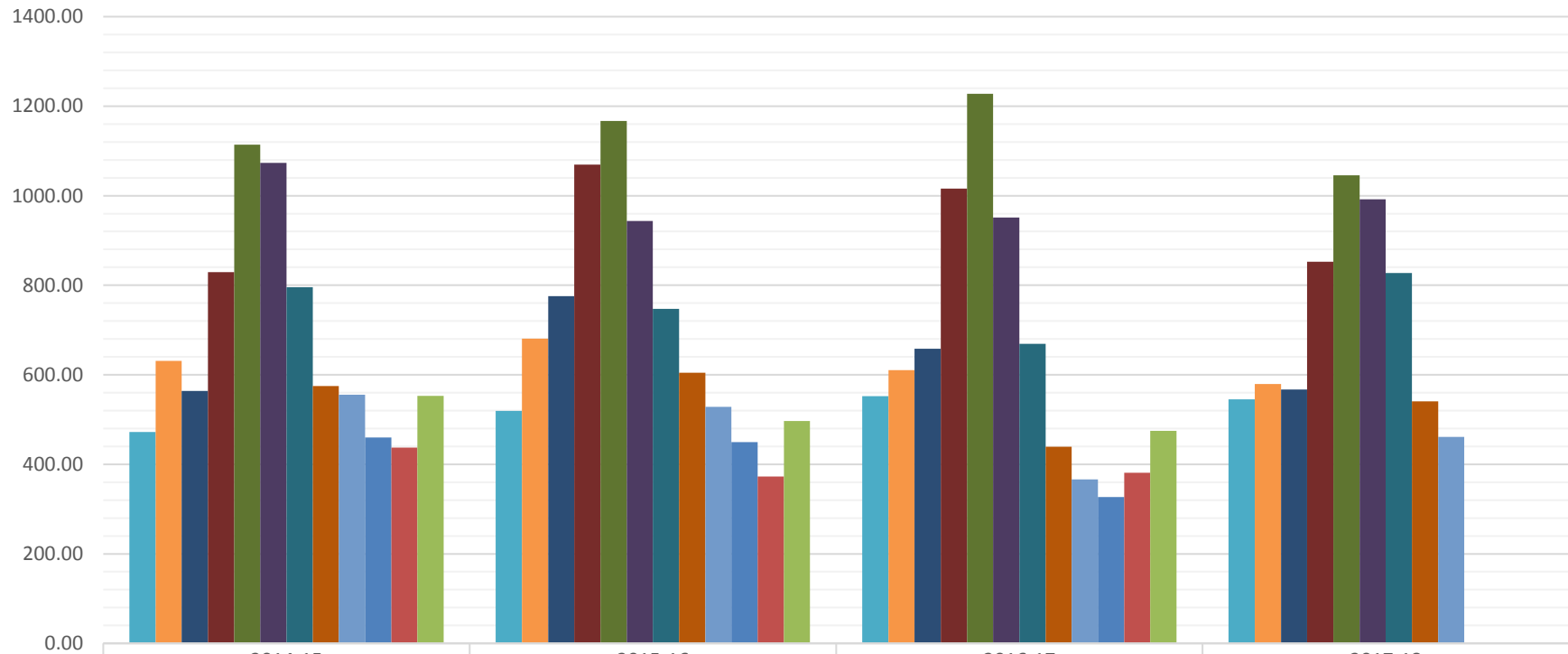
| | 2014-15 | 2015-16 | 2016-17 | 2017-18 |
|-----------|---------|---------|---------|---------|
| April | 307.58 | 295.35 | 323.28 | 332.71 |
| May | 281.28 | 292.21 | 334.64 | 332.26 |
| June | 255.21 | 282.92 | 348.29 | 292.69 |
| July | 244.47 | 285.96 | 313.39 | 246.92 |
| August | 222.19 | 289.14 | 347.74 | 264.57 |
| September | 206.47 | 262.75 | 376.05 | 273.10 |
| October | 234.88 | 302.00 | 364.01 | 267.75 |
| November | 245.20 | 319.82 | 335.15 | 268.76 |
| December | 312.49 | 355.56 | 352.72 | 292.25 |
| January | 297.58 | 355.51 | 379.61 | |
| February | 272.65 | 342.49 | 336.09 | |
| March | 279.85 | 343.50 | 387.32 | |

Bagasse Generation in MU



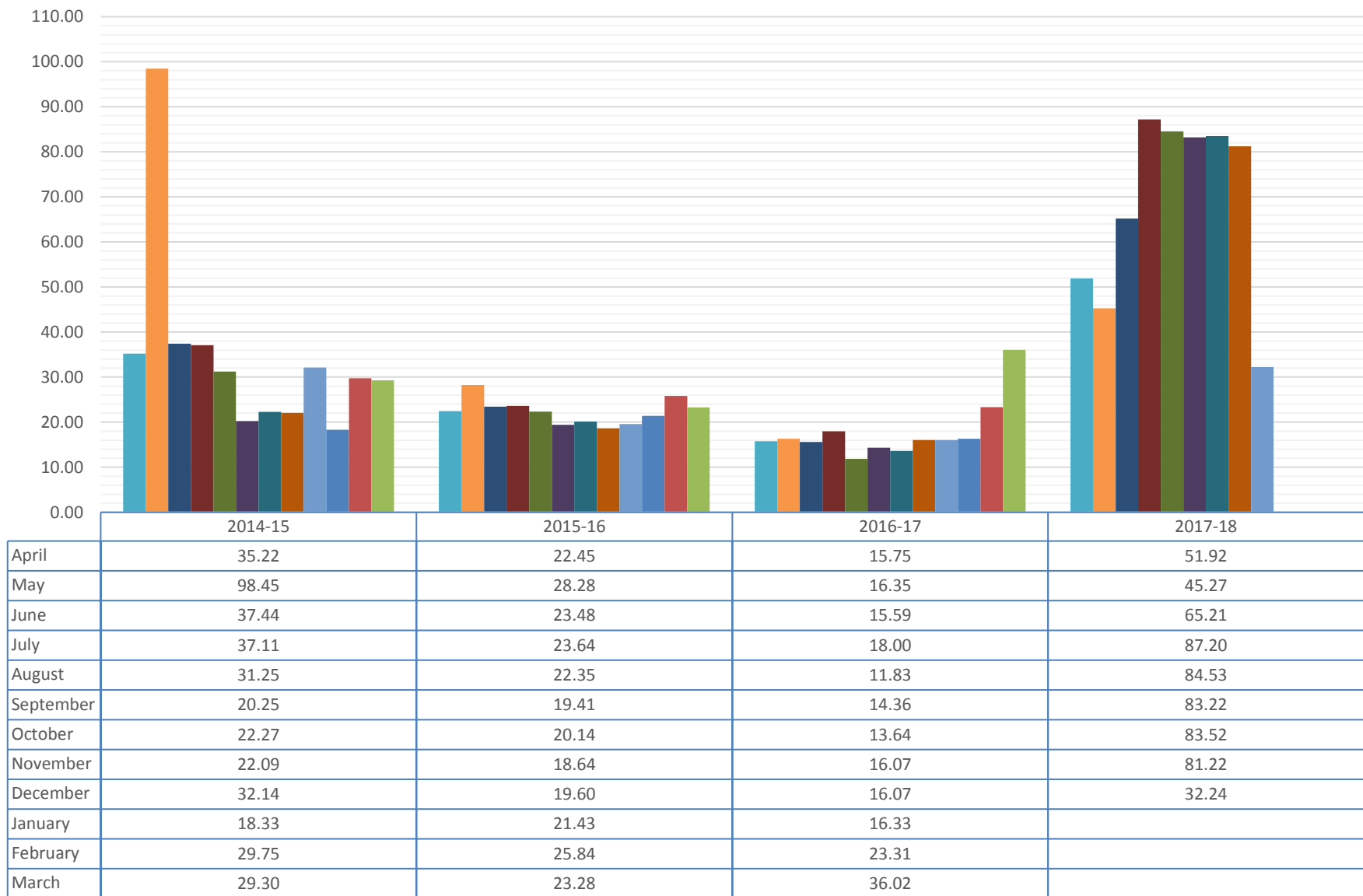
| | 2014-15 | 2015-16 | 2016-17 | 2017-18 |
|-----------|---------|---------|---------|---------|
| April | 1114.30 | 1371.06 | 964.34 | 644.57 |
| May | 475.98 | 906.95 | 666.84 | 374.65 |
| June | 379.17 | 546.65 | 332.13 | 276.31 |
| July | 326.73 | 432.99 | 267.86 | 228.18 |
| August | 459.74 | 414.56 | 238.98 | 281.64 |
| September | 428.56 | 425.52 | 326.08 | 270.42 |
| October | 445.96 | 522.31 | 410.87 | 332.17 |
| November | 754.31 | 1078.53 | 1177.57 | 1455.13 |
| December | 1802.99 | 1912.04 | 1790.83 | 2010.37 |
| January | 1945.86 | 1948.47 | 1591.83 | |
| February | 1833.12 | 1849.65 | 1175.60 | |
| March | 1817.92 | 1544.56 | 1017.41 | |

Small Hydro Generation in MU



| | 2014-15 | 2015-16 | 2016-17 | 2017-18 |
|-----------|---------|---------|---------|---------|
| April | 472.35 | 519.13 | 552.10 | 545.24 |
| May | 631.17 | 680.74 | 610.47 | 579.55 |
| June | 563.68 | 775.35 | 657.91 | 567.10 |
| July | 829.16 | 1069.77 | 1015.71 | 852.39 |
| August | 1114.17 | 1166.67 | 1227.44 | 1045.34 |
| September | 1073.28 | 943.70 | 951.52 | 992.14 |
| October | 795.46 | 747.37 | 669.23 | 827.07 |
| November | 574.68 | 604.47 | 439.41 | 540.49 |
| December | 555.27 | 528.56 | 366.48 | 461.25 |
| January | 459.69 | 449.34 | 326.90 | |
| February | 437.46 | 372.61 | 380.97 | |
| March | 553.13 | 496.80 | 474.54 | |

"Others" Generation in MU



* "Others" mean Waste to Energy Sources.